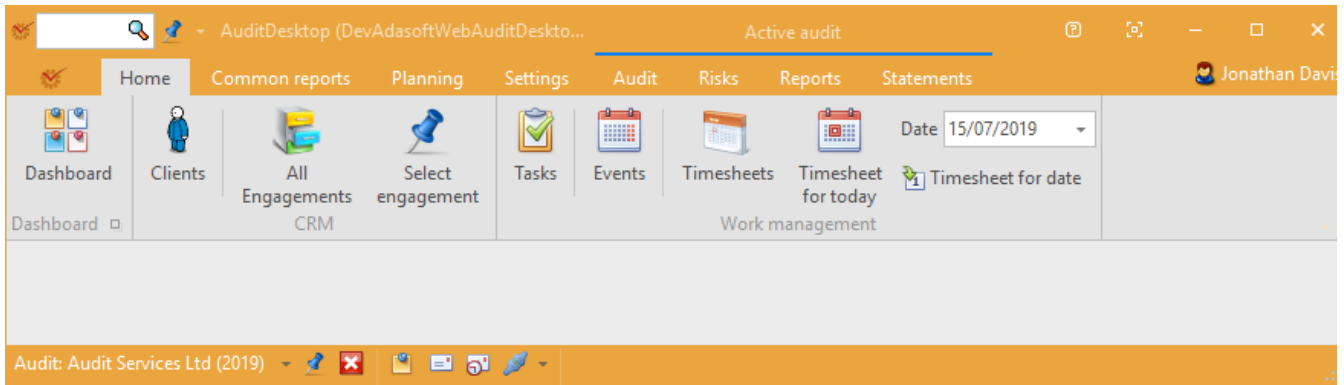


# Work on Active Engagement

AuditDesktop supports work on one [selected active engagement](#) at a time.

In active audit, the main window's Ribbon shows engagement-specific tabs that are separated in groups. Each tab gives access to different functions that are necessary for your work on the engagement.



- [Active Engagement](#)
- [Risks](#)
- [Reports](#)
- [Statements](#)
- [Search](#)